

LED-Spot **AG5** | **AG6** Metal IP20 | IP41



AG5D | IP41 | SYSTEM LUMINAIRE
RECHARGEABLE BATTERY LUMINAIRE



AG5E | IP20 | SYSTEM LUMINAIRE
RECHARGEABLE BATTERY LUMINAIRE



AG6D | IP41 | SYSTEM LUMINAIRE
RECHARGEABLE BATTERY LUMINAIRE



AG6E | IP20 | SYSTEM LUMINAIRE
RECHARGEABLE BATTERY LUMINAIRE

Would you like something a little more discreet? Then our new AG series is the right choice. The minimalist housing design blends harmoniously into any architectural environment. The AG series was developed to illuminate areas and emergency routes (in accordance with DIN EN 1838) using 6 different lenses.

Degree of protection	IP20 recessed IP41 surface mounted	
Class	I	
Enclosure material	Metal	
Enclosure colour/surface	RAL 9016 (white)	
Terminal block	3 x 2.5 ² for through wiring	
Light source	LED	
Ambient temperature	-20° C up to +40° C	0° C up to +40° C
Connected load (AC/DC)	6.5 VA/3.5 W	6.0 VA
Supply voltage	230V ± 10 %, 50/60 Hz/176-275 V DC	230V ± 10 %, 50/60 Hz
Akku		3.6 V/2.5 Ah (NiMH)

VARIANTEN

1 h with auto-check | with BUS check

3 h with auto-check | with BUS check

8 h with auto-check | with BUS check

without monitoring module •

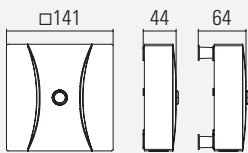
with monitoring module •

with DALI monitoring •

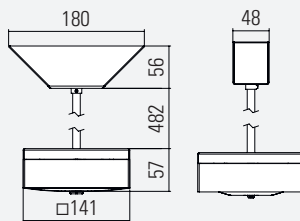
OPTIONS / ACCESSORIES

- Enclosure colours in RAL 7024 (Graphite grey) & RAL 9005 (Deep black) | - Other colours on request | - M6 Threaded rod adapter

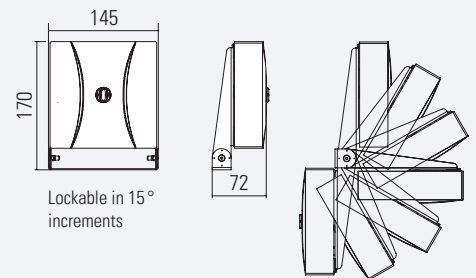
AG5D CEILING MOUNTING



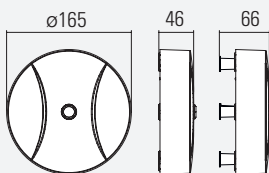
AG5P PENDANT MOUNTING



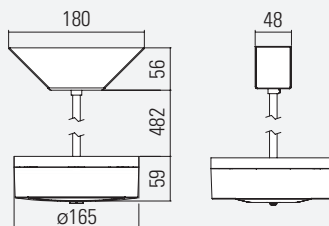
AG5A WALL BRACKET MOUNTING



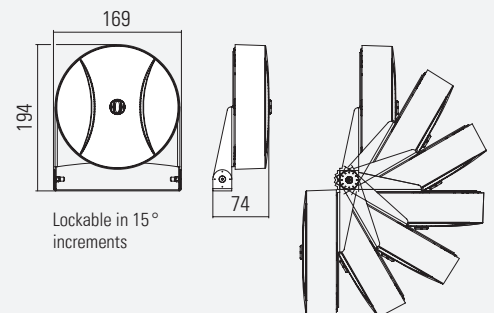
AG6D CEILING MOUNTING



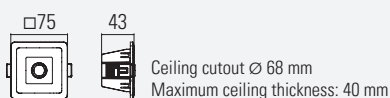
AG6P PENDANT MOUNTING



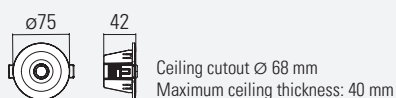
AG6A WALL BRACKET MOUNTING



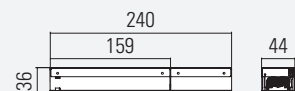
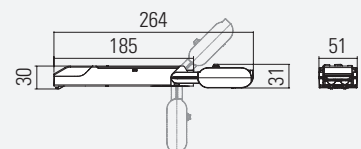
AG5E RECESSED CEILING MOUNTING



AG6E RECESSED CEILING MOUNTING



JUNCTION BOX FOR AG5E + AG6E (RECESSED MOUNTING)

Junction box System luminaire:
Minimum clear ceiling height: 100 mmJunction box Rechargeable battery luminaire:
Minimum clear ceiling height: 95 mm

LENS-VERSIONS

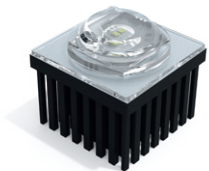
WHICH LENS WOULD YOU LIKE?

Thanks to our modular lens luminaire series, all lenses are compatible with all housings. The chosen luminaire design can therefore be continued uniformly for the first time in all areas and mounting heights of your project.



SYMMETRICAL LENSES FOR OPEN AREAS

ASYMMETRICAL LENSES FOR ESCAPE ROUTES



S1-LENS
Installation height up to 12m

Light source	LED
Connected load (AC/DC)	6.5 VA/3.5 W
Light current	304 lm
Light colour	6.500 k



A1-LENS
Installation height up to 11 m

Light source	LED
Connected load (AC/DC)	6.5 VA/3.5 W
Light current	270 lm
Light colour	6.500 k



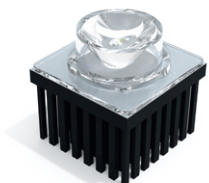
S2-LENS
Installation height up to 18m

Light source	LED
Connected load (AC/DC)	6.5 VA/3.5 W
Light current	289 lm
Light colour	6.500 k



A2-LENS
Installation height up to 16 m

Light source	LED
Connected load (AC/DC)	6.5 VA/3.5 W
Light current	284 lm
Light colour	6.500 k



S3-LENS
Installation height up to 30 m

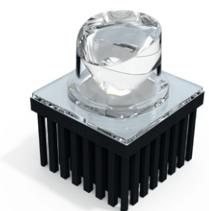
Light source	LED
Connected load (AC/DC)	6.5 VA/3.5 W
Light current	282 lm
Light colour	6.500 k



A3-LENS
Installation height up to 30 m

Light source	LED
Connected load (AC/DC)	6.5 VA/3.5 W
Light current	273 lm
Light colour	6.500 k

5 LX LENS FOR FOCUSED LIGHT



F1-LENS
Installation height up to 3,5 m

Light source	LED
Connected load (AC/DC)	6.5 VA/3.5 W
Light current	113 lm
Light colour	6.500 k

SYMMETRICAL LENSES

LIGHTING DATA (EN 1838)

VARIABLE HEIGHTS

Three symmetrical lenses are available. These are optimised for different installation heights (2 up to 30 m). Thanks to our modular Lensn luminaire series, all Lensn shown are compatible with all enclosures.

RECHARGEABLE BATTERY VARIATION

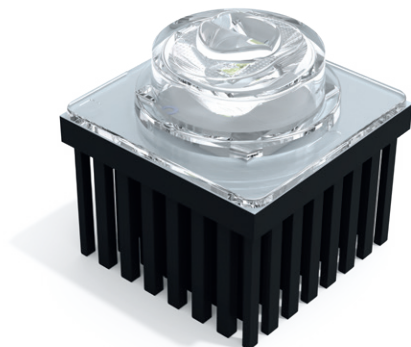
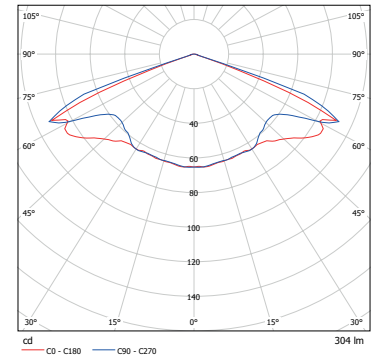
Whether as a system luminaire or battery-powered luminaire, both variants are operated with 100% luminous flux in emergency mode, therefore the luminaire spacing is identical for both versions.

SYMMETRICAL LENSES FOR OPEN AREAS



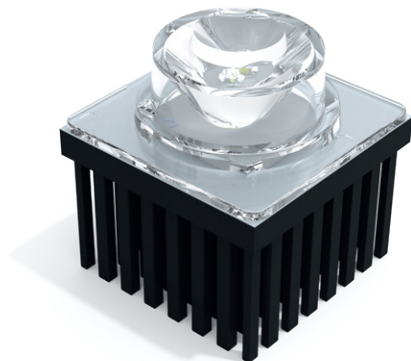
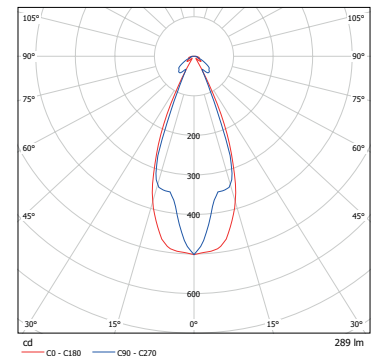
S1 - LENS
Installation height up to 12 m

Light source	LED
Connected load (AC/DC)	6.5 VA/3.5 W
Light current	304 lm
Light colour	6.500 k



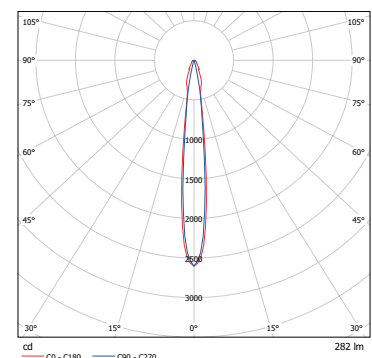
S2 - LENS
Installation height up to 18 m

Light source	LED
Connected load (AC/DC)	6.5 VA/3.5 W
Light current	289 lm
Light colour	6.500 k



S3 - LENS
Installation height up to 30 m

Light source	LED
Connected load (AC/DC)	6.5 VA/3.5 W
Light current	282 lm
Light colour	6.500 k



SYMMETRICAL LENSES

LIGHTING DATA (EN 1838)

Installation height [m]	1 lx Lighting of escape routes						1 lx Lighting of sales areas (self-service stores)						0.5 lx Lighting of open areas > 60m ² (anti-panic lighting)					
	S1 lens	S2 lens	S3 lens	S1 lens	S2 lens	S3 lens	S1 lens	S2 lens	S3 lens	S1 lens	S2 lens	S3 lens	S1 lens	S2 lens	S3 lens	S1 lens	S2 lens	S3 lens
2.00	4.50			10.00			3.25			7.75			4.00			8.25		
2.50	4.75			13.50			4.00			10.75			5.25			11.75		
3.00	4.25			13.50			4.00			10.75			5.25			11.75		
4.00	4.00	2.25		12.75	5.00		3.75	1.75		12.25	5.00		6.00	2.25		14.75	7.00	
5.00	3.75	2.75		11.50	6.00		2.50	2.00		11.25	5.50		5.75	2.50		16.50	6.75	
6.00	3.25	3.00		11.00	6.75		2.50	2.75		11.50	6.00		5.00	2.75		16.50	7.25	
7.00	2.25	3.25		11.25	7.75		2.50	3.00		11.50	6.75		4.75	3.00		14.50	8.00	
8.00	1.50	3.50	2.00	6.50	8.25	4.75	2.75	3.25	1.25	9.00	7.50	5.25	3.75	3.50	2.75	15.25	8.50	5.50
9.00		4.00	2.25		9.00	5.25	1.25	3.50	1.75	10.25	8.25	5.50	2.50	4.00	1.50	17.50	9.00	6.75
10.00		4.00	2.25		9.50	5.50	1.25	3.75	2.25	8.00	8.75	5.75	1.75	4.25	2.00	17.75	9.75	7.00
11.00		4.25	2.50		10.00	5.75	1.00	3.75	1.50	6.75	9.25	6.25	1.75	4.50	2.75	17.50	10.50	7.25
12.00		4.50	2.75		10.50	6.25	1.00	4.00	1.75	5.50	9.50	6.25	1.50	4.75	3.25	17.00	11.25	7.50
13.00		4.75	2.75		11.00	6.50		4.00	1.75		10.00	6.50		4.50	2.75		12.00	8.00
14.00		4.75	2.75		11.50	6.75		3.75	1.75		10.25	6.50		5.00	3.00		12.50	8.25
15.00		4.50	3.00		12.00	7.00		3.75	1.75		10.50	6.75		5.25	3.00		13.00	8.50
16.00		4.00	3.00		12.50	7.50		3.50	2.00		10.75	6.50		5.25	3.00		13.25	8.75
17.00		2.25	3.25		12.75	7.75		3.00	2.00		11.00	7.00		5.50	3.00		13.75	8.75
18.00		1.75	3.25		11.75	8.00		2.00	2.00		11.00	7.00		4.75	3.00		14.00	9.00
19.00			3.25			8.25			2.25			7.25			3.00			9.25
20.00			3.25			8.50			2.25			7.50			3.00			9.50
21.00			3.25			8.75			2.25			7.50			3.00			9.50
22.00			3.25			8.75			3.25			7.50			3.25			9.00
23.00			3.25			9.00			2.50			8.00			3.25			9.50
24.00			3.25			9.25			2.50			8.00			3.25			10.00
25.00			3.25			9.25			2.50			8.25			3.25			10.00
26.00			3.25			9.50			2.75			8.25			3.50			10.25
27.00			3.25			9.50			2.75			8.50			3.75			10.25
28.00			3.25			9.50			2.50			8.75			3.75			10.50
29.00			3.25			9.50			2.50			8.75			3.50			10.75
30.00			3.25			9.50			2.75			9.00			3.75			10.75

This table of distances (in metres) is based on the following factors:
measurement plane 2 cm, maintenance factor MF = 80 %, reflectance: 0

Dated: April 2021

ASYMMETRICAL LENSES

LIGHTING DATA (EN 1838)

VARIABLE HEIGHTS

Three symmetrical lenses are available. These are optimised for different installation heights (2 up to 30 m). Thanks to our modular Lensn luminaire series, all Lensn shown are compatible with all enclosures.

RECHARGEABLE BATTERY VARIATION

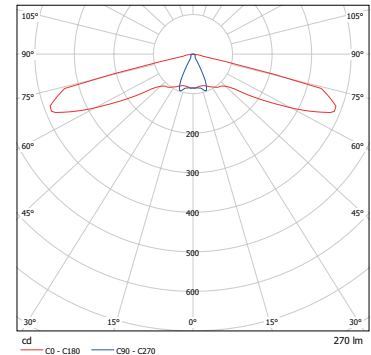
Whether as a system luminaire or battery-powered luminaire, both variants are operated with 100% luminous flux in emergency mode, therefore the luminaire spacing is identical for both versions.

ASYMMETRICAL LENSES FOR ESCAPE ROUTES



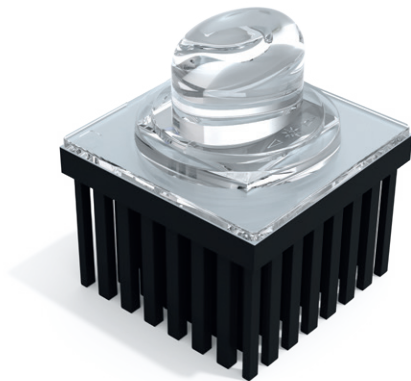
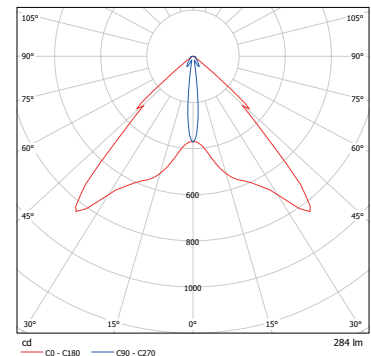
A1 - LENS
Installation height up to 11 m

Light source	LED
Connected load (AC/DC)	6.5 VA/3.5 W
Light current	270 lm
Light colour	6.500 k



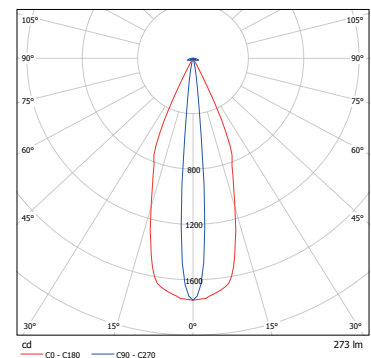
A2 - LENS
Installation height up to 16 m

Light source	LED
Connected load (AC/DC)	6.5 VA/3.5 W
Light current	284 lm
Light colour	6.500 k



A3 - LENS
Installation height up to 30 m

Light source	LED
Connected load (AC/DC)	6.5 VA/3.5 W
Light current	273 lm
Light colour	6.500 k



ASYMMETRICAL LENSES

LIGHTING DATA (EN 1838)

1 lx Lighting of escape routes									
Installation height [m]									
	A1 lens	A2 lens	A3 lens	A1 lens	A2 lens	A3 lens	A1 lens	A2 lens	A3 lens
2.00	7.25			16.00			14.25		
2.50	8.00			19.00			17.00		
3.00	8.50			21.50			17.25		
4.00	9.50	4.75		24.50	10.50		18.75	10.00	
5.00	8.75	5.75		26.50	12.50		17.50	12.00	
6.00	5.25	6.75		27.50	14.50		10.50	14.00	
7.00	4.50	7.75		24.00	16.75		8.25	16.00	
8.00	4.00	8.75	4.00	16.50	18.75	8.75	2.00	17.75	8.25
9.00	2.75	9.00	4.50	14.50	20.75	9.75		18.00	9.25
10.00	1.00	9.50	5.00	8.50	22.25	10.50		19.50	10.00
11.00	1.00	10.25	5.50	3.75	23.75	11.50		20.50	11.00
12.00		11.00	5.75		25.25	12.50		22.00	10.75
13.00		11.50	6.25		25.75	13.25		23.25	12.75
14.00		12.25	6.75		27.00	14.25		24.50	13.50
15.00		12.75	7.00		28.50	15.25		25.75	14.25
16.00		13.25	7.50		29.75	16.00		26.75	15.00
17.00			7.75			17.00			15.50
18.00			8.00			17.75			16.00
19.00			8.25			18.50			16.50
20.00			8.50			19.25			17.00
21.00			8.50			20.00			17.00
22.00			8.50			20.75			17.00
23.00			8.25			21.50			16.75
24.00			8.25			21.50			16.50
25.00			8.00			22.00			16.25
26.00			8.00			22.25			16.00
27.00			8.00			22.75			16.00
28.00			7.75			23.00			15.75
29.00			7.75			23.25			15.50
30.00			7.50			23.50			15.00

This table of distances (in metres) is based on the following factors:
 measurement plane 2 cm, maintenance factor MF = 80 %, reflectance: 0

Dated: April 2021

5 LX LENS

LIGHTING DATA (EN 1838)

The EN 1838 standard requires safety lighting near every fire-fighting and alarm system as well as first-aid equipment. We have developed the F1 lens for this purpose. The high-performance lens focuses the light according to the specifications of EN 1838 so that a vertical illuminance of 5 lx is achieved.

Normative illumination with 5 lx according to EN 1838 and ISO 23601 is required for:

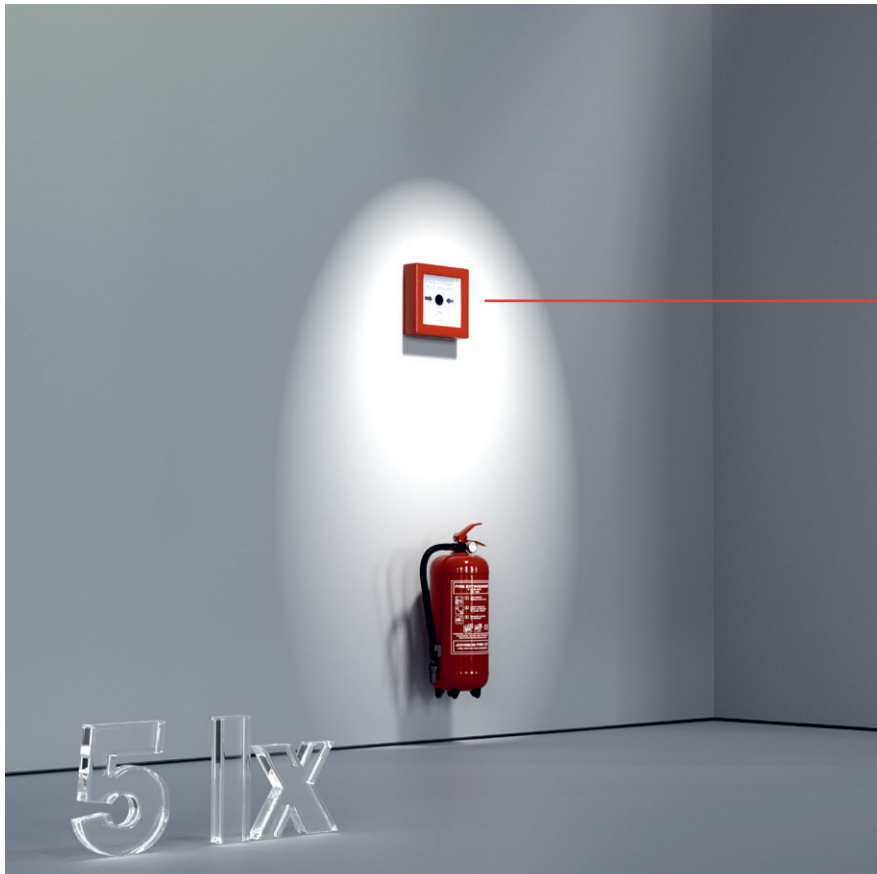
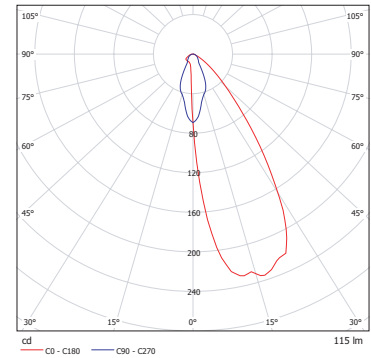
- Fire-fighting equipment (fire extinguishers)
- Safety equipment (first aid boxes)
- Signalling equipment (manual fire detectors)
- Escape and rescue plans

5 LX LENS FOR FOCUSSED LIGHT



F1-LENS
Installation height up to 3,5 m

Light source	LED
Connected load (AC/DC)	6.5 VA/3.5 W
Light current	113 lm
Light colour	6.500 k



Non-automatic fire detectors must be installed at a height of 140 cm (\pm 20 cm) above the floor.

